

TRAYS

- * Amenity & Variety Trays
- * Product Presentations
- * Hotel Amenities
- * Hospital Amenities
- * Tip Trays
- * Product Display

Item #	Description	Pack/Weight	Imprint Area	200 Pcs	500	1M	2.5M
357	5" x 7" Tray	100/cs 13#	3" x 1 ³ / ₄ "H	1.45	1.30	1.15	1.10
379	7" x 9" Tray	100/cs 20#	4" x 2 ¹ / ₂ "H	1.85	1.69	1.50	1.45
510	5 ³ / ₄ " x 10 ⁵ / ₈ " Tray	100/cs 21#	4" x 1 ³ / ₄ "H	1.85	1.75	1.55	1.50
333	6 ³ / ₄ " x 10" Tray	50/cs 16#	4" x 3"H	2.25	2.15	1.92	1.88
Add'l color imprint				.30	.25	.20	.18
							2B2C G

Lead Time: 10 working days

Prices include a 1-color imprint

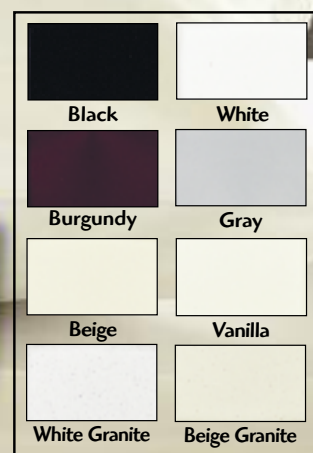
Set-up charge: \$40.00 (G) per color

Repeat order: \$20.00 (G) per color

Colors: 357/379 - Black, White, Beige, Vanilla, Burgandy, Gray, White Granite, Beige Granite

510 - White, White Granite, Beige Granite, Vanilla

333 - Black, White



357



379



333



510



POINT OF PURCHASE

- * Take-A-Penny, Leave-A-Penny
- * Handy & Useful
- * Advertise at Checkout Counter
- * Includes double-sided tape
- * Newspapers, Lotteries, Beverages
- * Local Merchants, Radio Stations

Item #	Description	Pack/Weight	Imprint Area	100	250	500	1M	2.5M	
725	News Sled	24/cs 17#	2" x 10"H	4.95	4.75	4.45	4.25	4.05	C
	Add'l color imprint			.65	.60	.45	.35	.32	G
Item #	Description	Pack/Weight	Imprint Area	168 Pcs	336	504	1M	2.5M	
677	Take-A-Penny Tray	168/cs 17#	3 1/2" x 1 1/8"H	1.59	1.44	1.29	.99	.89	3B2C
	Add'l color imprint			.40	.30	.25	.20	.17	G

Lead Time: 10 working days

Set-up charge: \$35.00 (G) per color

Prices include a 1-color imprint

Repeat order: \$20.00 (G) per color

Colors: #677 Black, White, Blue, Green, Red, Yellow

#725 White, Blue, Red



725

677

POINT OF PURCHASE

Item #	Description	Pack/Weight	Imprint Area	144 Pcs	288	504	1M	2.5M	
688	Take-A-Penny Pencil Cup	72/cs 28#	Tray 3 1/4" x 1 1/4" H Cup 2 1/2" x 2 3/4" H	1.89	1.69	1.60	1.40	1.35	3B2C
Add'l color/location imprint				.40	.35	.28	.22	.19	G

Lead Time: 10 working days

Set-up charge: \$35.00 (G) per color or location

Colors: Black, White, Blue, Green, Red, Yellow

Repeat order: \$20.00 (G) per color or location

*Prices are based on one color, one location imprint. Note additional color/location charges

- * Holds Coins, Pens & Pencils
- * Newspapers, Lotteries, Beverages
- * 2 Different Imprint Locations
- * Local Merchants, Sundries, Candy
- * 24 Hour Advertising
- * Check Cashing Business
- * Includes double-sided tape



POINT OF PURCHASE

Item #	Description	Size	Pack/Weight	Imprint Area	150 Pcs	300	600	1M	
778	Lane Divider	16" x 2 ³ / ₄ "H x 3 ¹ / ₄ "	50/cs 17#	15 ³ / ₈ " x 2 ¹ / ₄ "	6.95	5.95	4.75	3.95	C
	Add'l color imprint				1.20	.60	.35	.25	G
2nd Side Copy Change add \$40.00 (G) per color. Color Changes - Please call for quote									
Item #	Description	Size	Pack/Weight	Imprint Area	135 Pcs	270	505	1M	
777	Grocery Divider	14" x 1 ⁷ / ₈ "H x 1 ¹ / ₄ "	45/cs 8#	9" x 1"	2.50	2.40	2.30	1.95	C
Add \$.75 (G) for each add'l imprint. 2nd Side Copy Change add \$.45 per unit (G) each color									
Item #	Description	Size	Pack/Weight	Imprint Area	100 Pcs	225	450	1M	
775	Square Divider	16 ¹ / ₂ " x 1" Sq	225/cs 30#	15 ¹ / ₄ " x 7 ⁷ / ₈ " (4 Loc)	3.15	2.95	2.85	2.75	C
Add \$.20 (G) for 4 color process imprint. No add'l charge for multiple spot color imprints									

Lead Time: 20 working days

Set-up charge: \$40.00 (G) per color

Colors: 777/778 - White, Blue
775 - Clear

Prices include a 1-color imprint

Repeat order: \$20.00 (G) per color

777/778 - Prices include the same imprint on both sides



- * Checkout Lane Dividers
- * Local Advertisers
- * Impulse Purchases
- * Newspapers, Sundries, Candy
- * Bold Advertising Area
- * Barcode Scanning
- * Bank/Credit Cards



FLYERS

- * Wide Variety of Colors
 - * Bold Imprints
 - * Kids Promotions
- * Picnics, Family Events
 - * Outdoor Activities
 - * Charities

Item #	Description	Pack/Weight	Imprint Area	300 Pcs	600	1M	2.5M
107	7" Flyer	60/cs 9#	3 1/2" Dia.	.95	.92	.85	.82
109	9" Flyer	100/cs 20#	5" Dia.	.95	.92	.85	.82 C
Add'l color imprint				.24	.21	.18	.16 G

Lead Time: 10 working days

Prices include a 1-color imprint

Set-up charge: \$35.00 (G) per color

Repeat order: \$20.00 (G) per color

Colors: Blue, Neon Orange, Red, White, Granite, Yellow, Neon Pink, Neon Green, Tr. Green, Tr. Blue, Black, Tr. Red

Add \$.07(G) for polybagging dark colors



109

107

HEALTHCARE

- * Handy, Useful Items
- * Nurses Stations
- * Pad Pocket Fits Prescription Pads
- * 3 Printable locations on Clipboards
- * Healthcare Providers
- * Industrial Use

Item #	Description	Pack/Weight	Imprint Area	250 Pcs	500	1M	2.5M	
555	Pad Pocket	50/cs 20#	4" x 2 1/2" H	2.50	2.45	2.35	2.25	C
	Add'l color imprint			.30	.25	.20	.18	G
Item #	Description	Pack/Weight	Imprint Area	144 Pcs	288	504	1M	2.5M
815	Clipboard	24/cs 16#	Front 8" x 9 1/2" H	3.95	3.85	3.75	3.55	3.45
	Add'l color imprint on clip		Clip 3" x 1 1/2" H	.28	.24	.21	.18	G
	Add'l color imprint on Board		Back 8" x 11" H	.60	.55	.45	.35	G

Lead Time: 10 working days

Set-up charge: \$40.00 (G) per color/location

Colors: 555 - White; 815 - White, Black

Clipboard prices include a 1-color imprint on clip or board

Repeat order: \$20.00 (G) per color/location

Pad Pocket includes 50 sheet pad, Blank Pads \$.20 each (G)



815



555

HEALTHCARE

- * **Bold, Attractive Imprints**
- * **Advertising at point of diagnosis**
- * **Pharmaceutical Promotions**
- * **Healthcare providers**
- * **Nurse's Stations**
- * **Extra Large Imprints**
- * **Covers Generic Boxes**
- * **Fits Tissues & Disposable Gloves**

Item #	Description	Pack/Weight	Imprint Area	144 Pcs	288	504	1M	2.5M
444	Tissue Cover	36/cs 20#	2 1/2" H x 3"	3.95	3.85	3.60	3.40	3.30 C
Add'l color/different art imprint \$.50 (G), Additional side imprint/same art \$.25 (G)								
Item #	Description	Pack/Weight	Imprint Area	144 Pcs	288	504	1M	2.5M
440	Glove Box Cover	16/cs 13#	8" x 3"H	5.25	4.95	4.70	4.40	4.25 C
Add'l color/different art imprint \$.50 (G)								

Lead Time: 10 working days

Set-up charge: **\$40.00 (G) per color**

Colors: White

#444 Prices include a 1-color 1-location imprint

Repeat order: **\$20.00 (G) per color**

#440 Prices include 1-color 2-location imprint

Add \$1.50 for tissues (G)



444

440

HEALTHCARE

- * Useful Containers
- * Healthcare Promotions
- * Dr.'s Container Holds Tongue Depressors
- * "Apple-A-Day" Preventative Messages
- * Treatment Centers
- * Kids Promotions
- * Bank Promotions
- * Real Estate

Item #	Description	Pack/Weight	Imprint Area	135 Pcs	270	540	1M	2.5M
52	Apple Container	45/cs 15#	3" x 1 1/8"H	2.15	2.05	2.00	1.95	1.90
690	Dr.'s Container	36/cs 16#	3" x 3"H	3.25	3.15	3.05	2.90	2.85 C
Item #	Description	Pack/Weight	Imprint Area	250	500	1M	2.5M	
711	7 Day Small Pill Box	250/cs 18#	5" x 5/8"H	.79	.75	.69	.65	
712	7 Day Large Pill Box	250/cs 26#	6" x 3/4"H	.93	.89	.83	.79	C
Add'l color imprint				.24	.21	.18	.16	G
Item #	Description	Pack/Weight	Imprint Area	144 Pcs	288	576	1M	2.5M
58	House Bank	48/cs 18#	3 1/4" x 1 1/4"H	2.95	2.85	2.70	2.60	2.55 C
Add'l color imprint				.30	.28	.25	.20	.18 G

Lead Time: 10 working days

Set-up charge: \$35.00 (G) per color

Colors: 52 - Clear, Trans Red, Trans Green
 690 - Clear
 711/712 - White
 58 - Clear, Trans Red, Trans Blue

Prices include a 1-color imprint

Repeat order: \$20.00 (G) per color



PENLIGHTS

Item #	Description	Colors	250	500	1M	2.5M
40	Penlight	9 Colors	1.45	1.35	1.30	1.25
42	Penlight Pro LED Light	White	1.55	1.45	1.40	1.35
45	Pocketlight	White	2.25	2.15	2.05	1.95
47	Pinnacle Light	White	3.19	3.09	2.99	2.86 C

Lead Time: 10 working days

Prices include a 1-color imprint

Multiple color imprints are available if the registration is not too tight, at an additional charge of \$.20 (G)

Set-up charge: \$40.00 (G) per color Repeat order: \$20.00 (G) per color

Penlights - Our disposable penlight is the #1 selling penlight in the industry. The penlights are activated by pressing the clip to the light. Each comes with 2 AAA heavy duty mercury free batteries and a high quality incandescent bulb. Penlight Pro comes with an LED bulb for incredibly long lasting life. The #40 penlight is available in nine popular colors.

Pocketlight - Re-usable pocketlights open easily for replacing the batteries for extended life. The Pocketlight is activated by pressing the clip to the light, and comes with 2 AAA heavy duty mercury free batteries and a high quality incandescent bulb. The pocketlight is available in white.

Pinnacle Lights - The Pinnacle Light is our highest quality light, featuring a lacquer finished white metal barrel, and black clip accents. It opens easily for replacing the 2 AAA heavy duty mercury free batteries. Pinnacle Lights come with a krypton bulb for maximum illumination. The light is activated using an on/off push button switch. Pinnacle Lights are available in white.



POCKET LIGHT #45



PINNACLE LIGHT #47



PENLIGHT #40



PENLIGHT PRO LED LIGHT #42



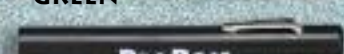
ORANGE



GRAPE



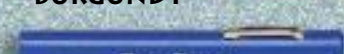
GREEN



BLACK



BURGUNDY



BLUE



SLIVER



RED



WHITE



REGULAR PENLIGHT



LED PENLIGHT

PENLIGHT ACCESSORIES



CANDLETIP \$.25 (C)



BLUE LENS FILTER \$.65 (C)



DENTAL MIRROR \$.85 (C)

A NOTE ABOUT OUR PRODUCTS

ProRose products are made of a variety of plastic materials. Our products are surface imprinted, and imprints may fade or deteriorate over time. Cleaning our products using dishwashers, alcohol based cleansers, and abrasive cleaning agents will negatively affect the imprint and the products integrity and lifespan. For best results, rinse and pat dry with a soft cloth.

SAFETY GUIDELINES

ProRose products are produced using the highest quality safety standards. Plastic resins are free of any and all mercury, cadmium and chromium compounds and are safe for use in direct food contact and packaging. Our printing inks are also free of lead and heavy metals.

ACKNOWLEDGMENTS

All orders are acknowledged with pricing and information pertaining to the order, as well as a projected shipping date. Please read the acknowledgment carefully, and advise immediately of any discrepancies.

ART/GRAPHICS

Catalog prices include a 1-color imprint. We will reduce or enlarge as needed at no cost. Any touch-up, typesetting, or prep work to produce proper color separations will be billed additionally. ProRose accepts electronic artwork created in Adobe Illustrator, EPS Format, PDF Format. Type elements must be converted to outlines (curves). Your artwork files may be submitted via our web site www.ProRose.com, via email, or on CD-ROM media. Halftone images need to be set up as 65 line screen. Each imprint color should be identified, and a hard copy of your art should accompany your order.



ProRose follows industry guidelines for our imprinting processes. All of our products require the sm@rt requirement of 15, which calls for vector images for spot color printing. All colors in file must specify a particular Pantone® color number.

SHIPPING

F.O.B. our factories in CT/NJ/PA. Shipments are made per your instructions, or per our discretion if not specified. UPS, Fed-Ex or common carrier (truck) if large enough. We can guarantee shipment date when necessary, but cannot guarantee arrival dates. Customer must authorize air shipments. **Purchaser should promptly file all claims (damage, delay, or loss) with the delivering carrier. We are not responsible for damage or delays in transit.**

SHIPPING SERVICE CHARGES

Add **\$8.00 (G)** each, for shipments to more than one address, split shipments and C.O.D. shipments.

RUSH SERVICE

For orders requiring shipment in less than our stated lead time, add **\$75.00 (G)** Standard rush service is considered shipping within 5-9 days of receipt of order and artwork approval. Super rush service is considered shipping within 1-4 days of receipt of order and artwork approval, add **\$125.00 (G)**. All rush services must be confirmed and approved by ProRose, pending product availability and production capability.

OVERRUNS & UNDERRUNS

All shipments will attempt to be as per the order quantity. We reserve the right to ship and bill up to 10% over or under the desired quantity due to various manufacturing factors. Add **\$30.00 (G)** for exact quantities. **All orders will be rounded to the nearest full case pack to prevent damage in transit.**

LESS THAN MINIMUM

Full case packs are our absolute minimum. Add **\$60.00 (G) per color** for below 1st column quantities.

PRE-PRODUCTION PROOFS

If pre-production proofs are needed, costs are **\$31.25 (G) per color for product proof** + cost of product. Be advised that proofs will extend delivery by approximately 2 weeks. Pre-Production proofs are not available on certain items.

IMPRINT COLORS

Standard imprint colors are Gold, Silver, Black, White, Reflex Blue, Blue 2768C, Process Blue, Violet 275C, Rhodamine Red, Red 185C, Red 186C, Maroon 194C, Brown 469C, Gray 430C, Pantone Yellow, Yellow 123C, Orange 179C, Green 355C, Green 357C and Green 334C. PMS colors are matched as closely as possible. Add **\$25.00 (G) for PMS matches**. Certain exact color matches are not possible.

UNIMPRINTED PRODUCT

All of our products are available unimprinted. Please inquire for pricing and availability.

CANCELLATIONS/RETURNS

Cancelled orders are subject to a \$75.00 cancellation charge plus all work and materials completed at the time of cancellation. Imprinted merchandise sales are final and cannot be returned. Non-imprinted items cannot be returned without ProRose authorization and are subject to a 20% re-stocking charge; freight prepaid. Any claims regarding our products must be made within 30 days of shipment.

CONDITIONS OF SALE

All orders are subject to acceptance by ProRose and product availability. Terms: Pre-payment on initial orders; Net 30 days (pending credit approval). **Prices subject to change without notice.** Visa, MasterCard, and American Express accepted.

TRADEMARK DISCLAIMER:

The artwork, designs, and trademarks imprinted on the promotional products displayed herein are reproduced only as examples of the type and quality of imprinted products available and are not intended to represent that the products are either endorsed or produced by the owners of the artwork, designs, or trademarks.

